

PRELIMINARY GRADING AND DRAIN PLAN
BROADSTONE CROSSING
PARCEL 1
 CITY OF FOLSOM, CALIFORNIA

LEGEND	PROPOSED	EXISTING
DESIGN ELEVATION		
EXISTING SPOT ELEVATION		471.16
CONTOUR (5 FOOT)		
CONTOUR (1 FOOT)		
STORM DRAIN		
MANHOLE		
DROP INLET		
OVERLAND RELEASE ROUTE		

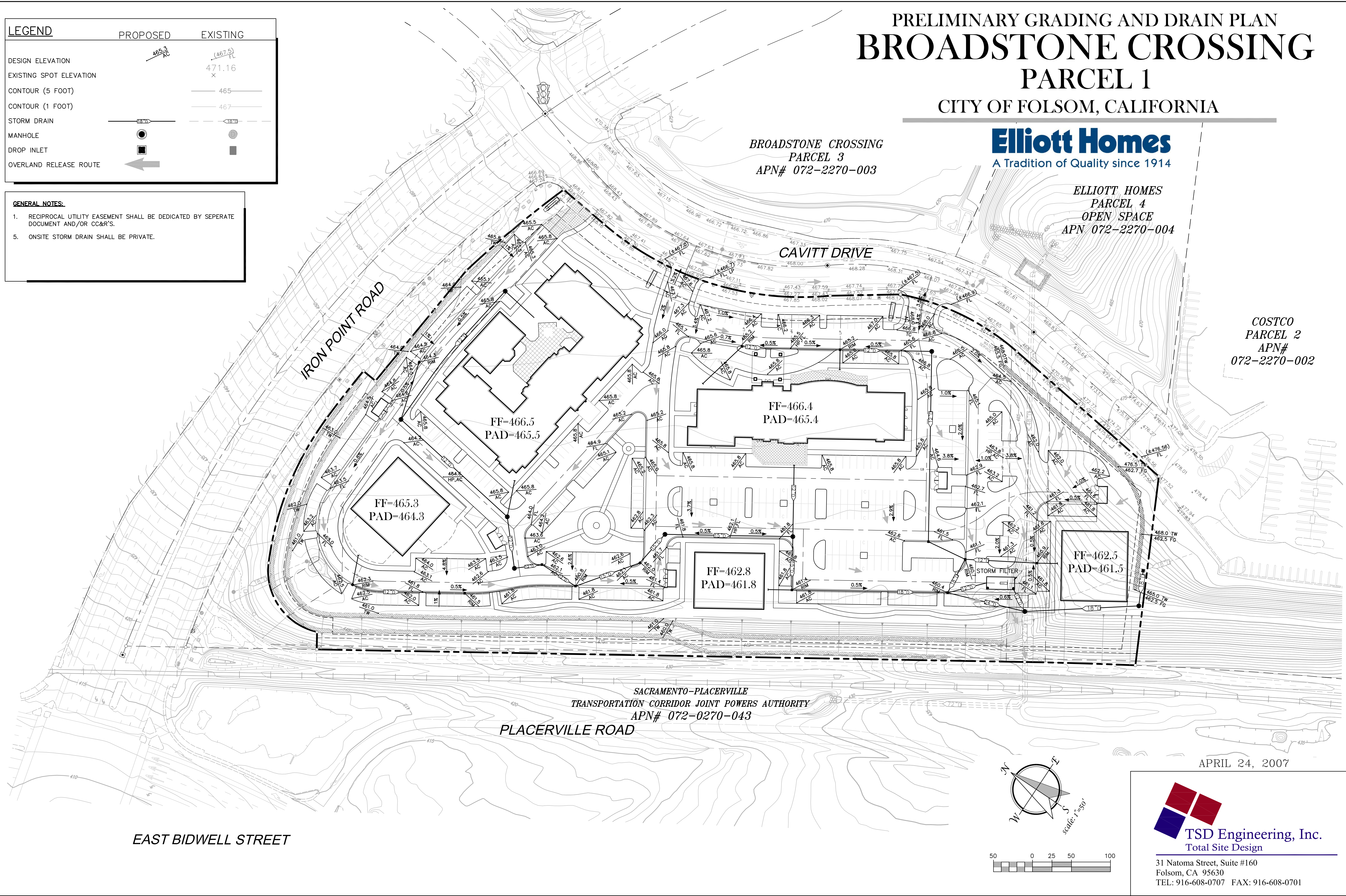
- GENERAL NOTES:**
- RECIPROCAL UTILITY EASEMENT SHALL BE DEDICATED BY SEPARATE DOCUMENT AND/OR CC&R'S.
 -
 -
 -
 - ONSITE STORM DRAIN SHALL BE PRIVATE.

BROADSTONE CROSSING
 PARCEL 3
 APN# 072-2270-003

Elliott Homes
 A Tradition of Quality since 1914

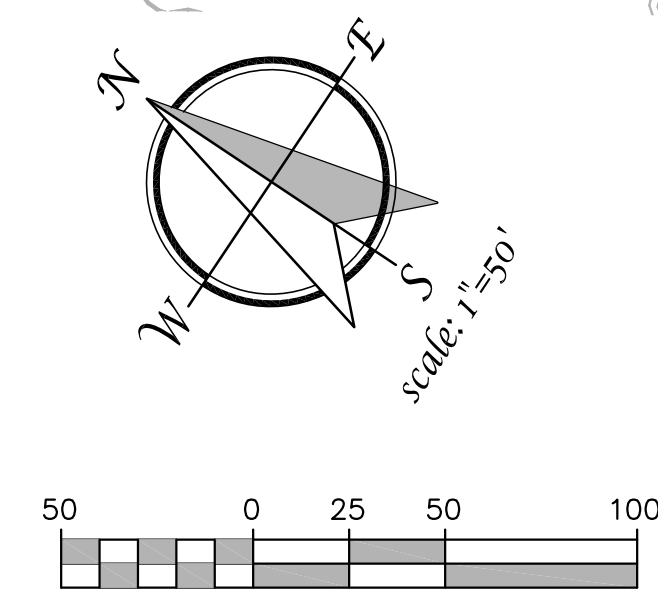
ELLIOTT HOMES
 PARCEL 4
 OPEN SPACE
 APN 072-2270-004

COSTCO
 PARCEL 2
 APN#
 072-2270-002



SACRAMENTO-PLACERVILLE
 TRANSPORTATION CORRIDOR JOINT POWERS AUTHORITY
 APN# 072-0270-043

APRIL 24, 2007



TSD Engineering, Inc.
 Total Site Design

31 Natoma Street, Suite #160
 Folsom, CA 95630
 TEL: 916-608-0707 FAX: 916-608-0701

EAST BIDWELL STREET

P:\Projects\03-007\DWG\PLANNING\06\Preliminary Grading Plan.dwg, Date: 09/25/20, 04:25:07